

TEMPORARY INSTALLATIONS



GEDA[®]
ORIGINAL



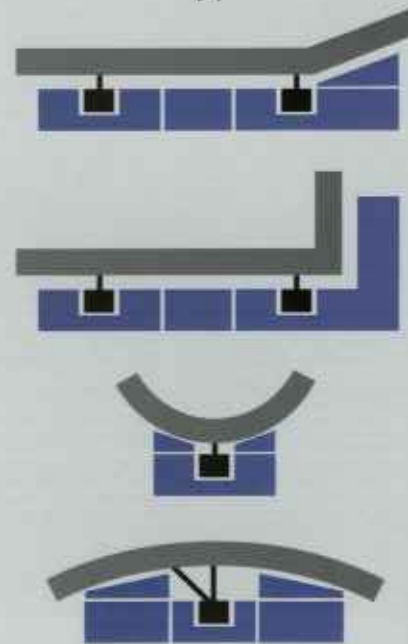
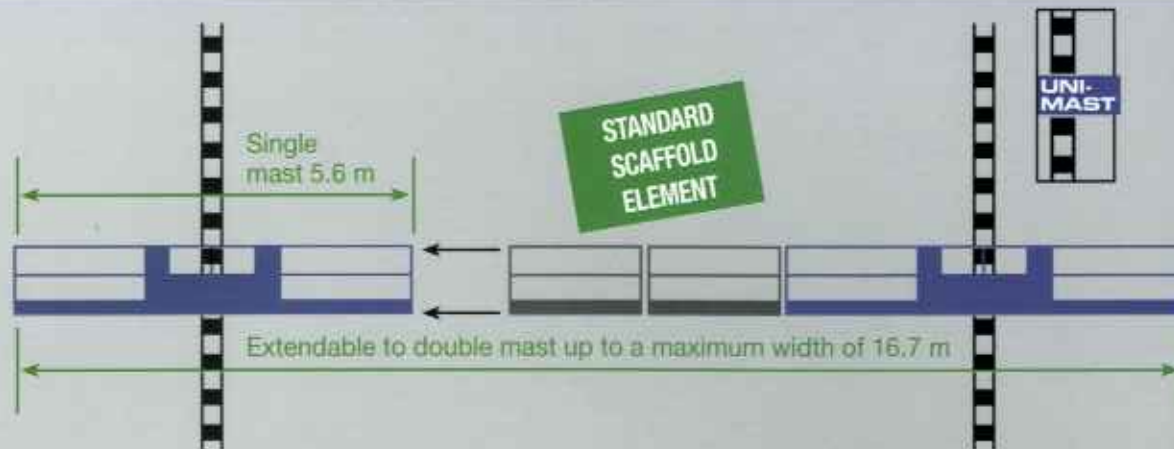
GEDA[®]
MAST CLIMBING
PLATFORM MCP 750

GEDA[®]
MAST CLIMBING
PLATFORM MCP 1500

GEDA®

Mast Climbing Platforms

The electrical scaffolds to be directly installed to the building façade. Adaptable to every construction site.



MCP 750 / MCP 1500

are mast climbing platforms, which can be used fast and flexibly. Due to their modular design, they are extremely efficient.

You can upgrade the single mast platform MCP 750 to a double mast climbing platform. In so doing, you get a working platform with a platform width of up to 16.7 m!

You can adapt the GEDA Mast Climbing Platforms to the nature of the building and your working situation: Projections on the wall, angles, curves.

GEDA quality realized in the modular system principle!

► Assembly/ Dismantling

- ▷ use standard scaffold elements
- ▷ the GEDA UNI MAST can be used for a wide range of GEDA hoists
- ▷ space saving for transport and storage

► Safety

- ▷ overload indicator and control switch-off
- ▷ automatic inclination correction
- ▷ diagnosis system in the control



GEDA®

Mast Climbing Platforms – Our all-rounders for vertical access!

Transport people quickly to their workplace. Serve as working platforms for several people.



► Ideal working conditions

- ▷ working ergonomically
- ▷ electrical power connection on the platform
- ▷ lifting device and scaffold all-in-one – up to 40% faster work cycle
- ▷ working freely on the walls

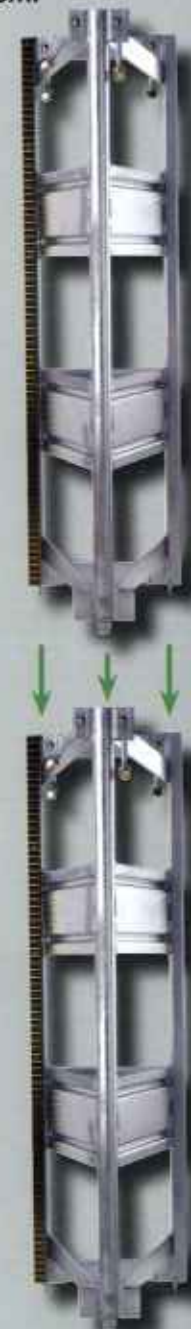
► Extremely improved logistics on the building

- ▷ long anchoring distances
- ▷ no worries with tenants:
 - no tilts, no nets impede the incident of light
 - no risk of burglary – the working platform is secured on the ground
 - no rent cutback

GEDA® UNI-MAST

An ingenious system: you can use the GEDA UNI-MAST for all GEDA rack and pinion hoists from 500 kg to 2000 kg load bearing capacity.

Flexible and economic working with only one mast system!



Only put together the 1.5 m mast sections and screw them with captive screws and safety nuts.

ms
 s to be directly installed
 . Adaptable to every

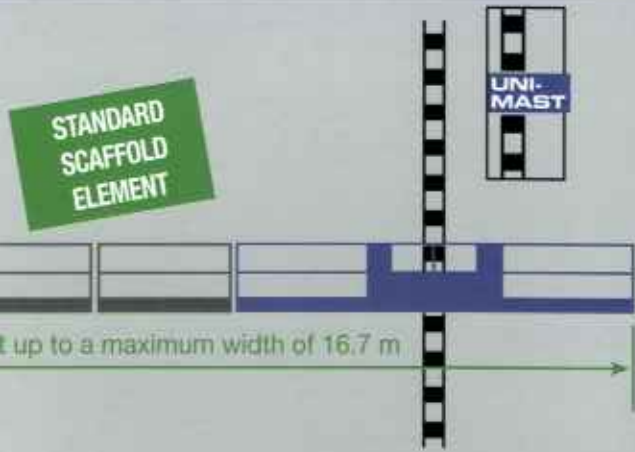
GEDA
 MAST CLIMBING PLATFORM
 MCP 750

The universal single-mast climbing platform with a working platform width of up to 5.6 m and a maximum load bearing capacity of 750 kg.



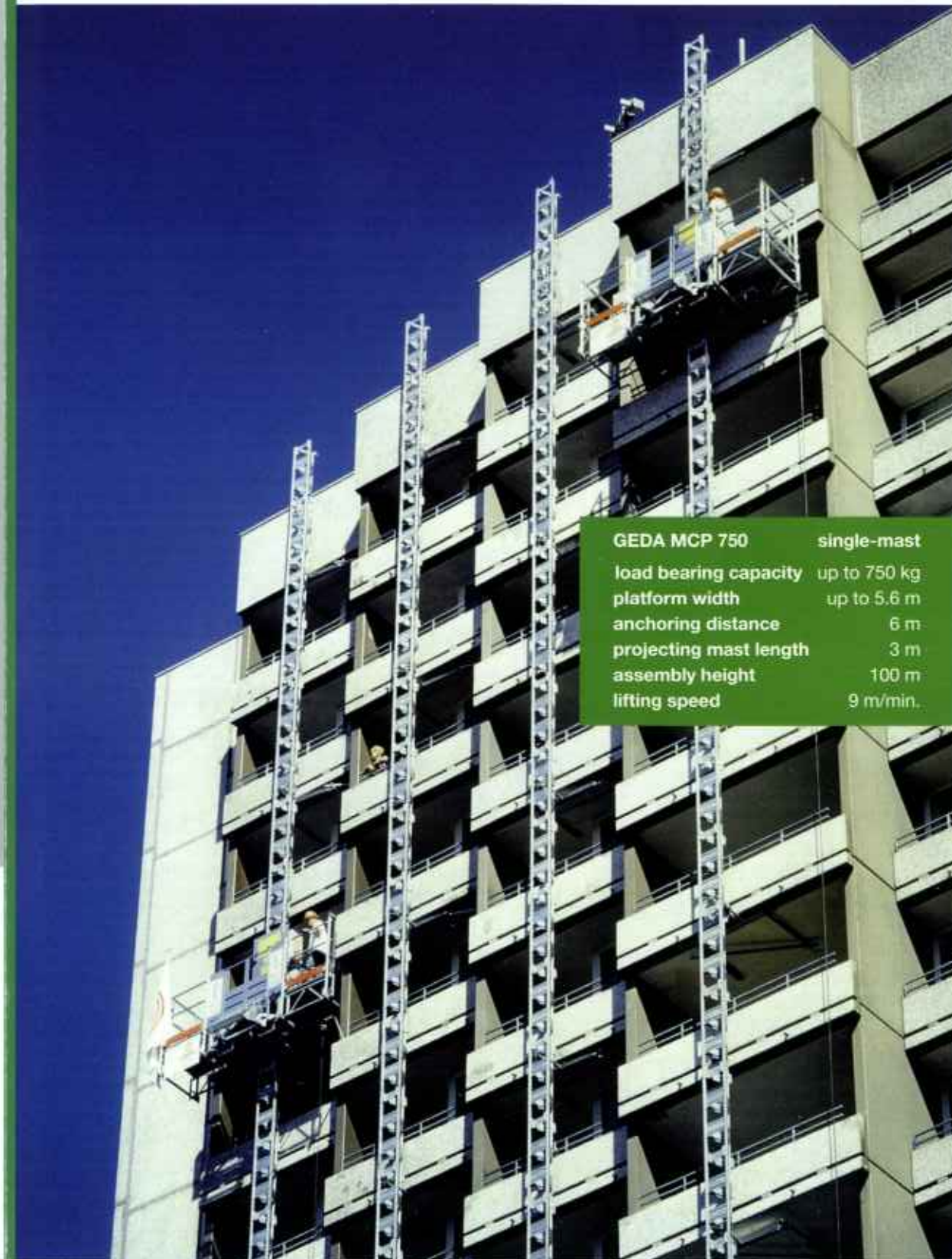
GEDA
 MAST CLIMBING PLATFORM
 MCP 1500

The double mast-climbing platform can be flexibly extended up to a total width of 16.7 m. Maximum load bearing capacity 1500 kg!

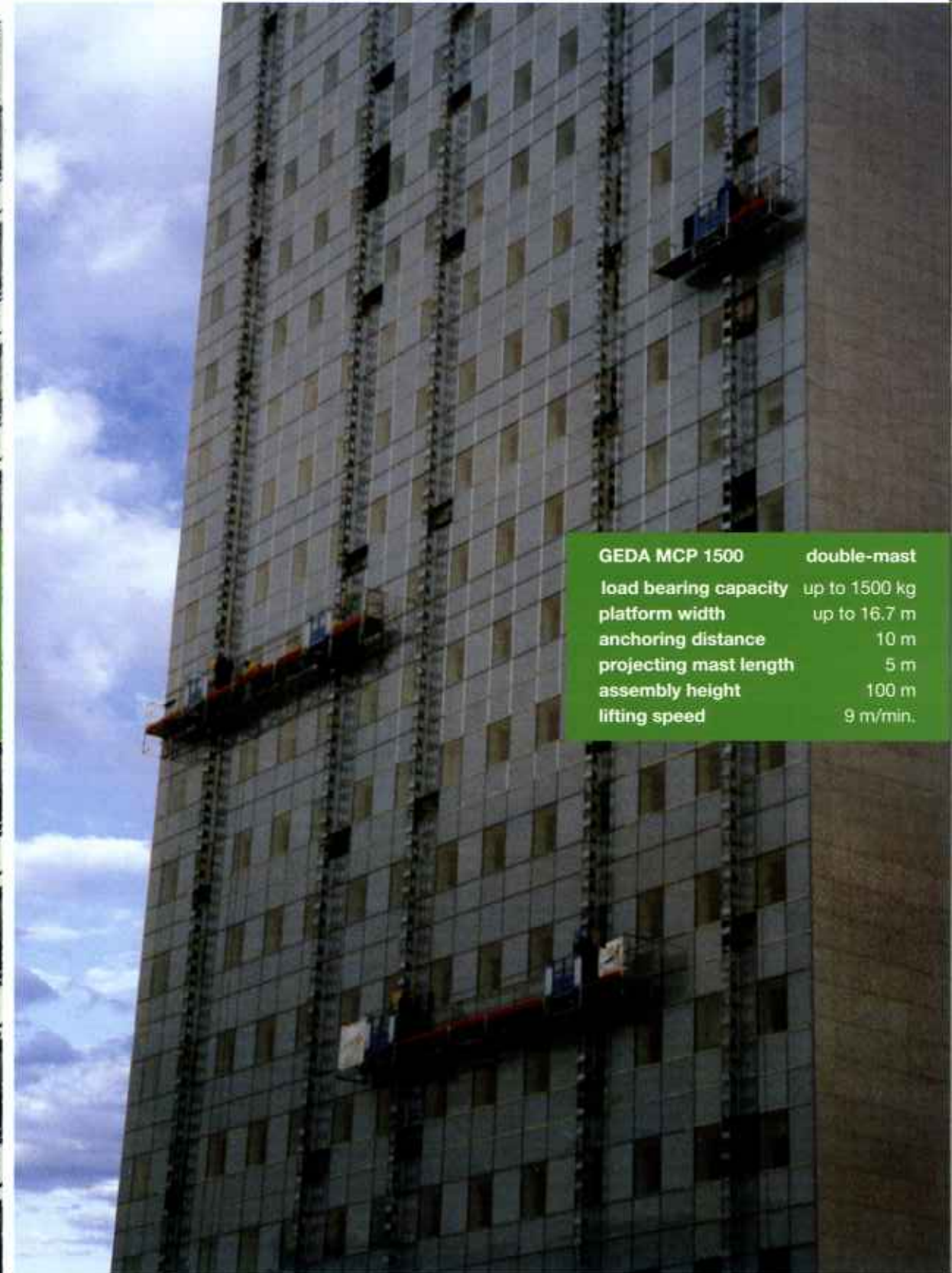


MCP 750 / MCP 1500

are mast climbing platforms, which can be used fast and flexibly. Due to their modular design, they are extremely efficient. You can upgrade the single mast platform MCP 750 to a double mast climbing platform. In so doing, you get a working platform with a platform width of up to 16.7 m! You can adapt the GEDA Mast Climbing Platforms to the nature of the building and your working situation: Projections on the wall, angles, curves. **GEDA quality realized in the modular system principle!**



GEDA MCP 750	single-mast
load bearing capacity	up to 750 kg
platform width	up to 5.6 m
anchoring distance	6 m
projecting mast length	3 m
assembly height	100 m
lifting speed	9 m/min.



GEDA MCP 1500	double-mast
load bearing capacity	up to 1500 kg
platform width	up to 16.7 m
anchoring distance	10 m
projecting mast length	5 m
assembly height	100 m
lifting speed	9 m/min.



- ▷ Innovations
- ▷ Know-how
- ▷ Latest manufacturing technologies



GEDA[®]
ORIGINAL



GEDA[®]
World-wide competence



Your dealer:

GEDA[®]
ORIGINAL

**GEDA-Dechentreiter
GmbH & Co. KG**

Mertinger Straße 60
D-86663 Asbach-Bäumenheim
Phone +49 (0) 906 9809-0
Fax +49 (0) 906 9809-50
vertrieb@geda.de
www.geda.de